



MOYA
LIVING

Outdoor Kitchen Selection Guide

Welcome to the opulent world of Moya Living, where steel transcends mere utility. We are the architects of cabinetry, the ateliers of aesthetics, and artisans of metal fabrication for both interior and exterior applications.





KITCHEN/BATH



GARAGE



COMMERCIAL



LAUNDRY



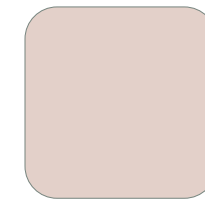
OUTDOOR

ABOUT US

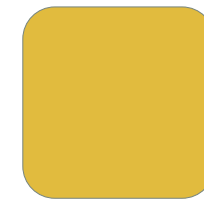
Moya Living is a California based designer and manufacturer of one-of-a-kind, luxury powder coated steel cabinets. It is a profoundly creative spin-off of sister company Genie Scientific Inc, a forty plus year old leading manufacturer of steel lab furniture. Genie has pioneered design and development for the top labs in the world, such as Apple, Facebook, Tesla, Space X and Pfizer.

Through decades of forward thinking and development in the world's elite labs, Moya Living was born to supercharge traditional steel lab furniture. Combining the durability and functionality of steel, with top-end design and premier color finishes; This yields a product so exquisite, that it must be seen and felt to be believed.

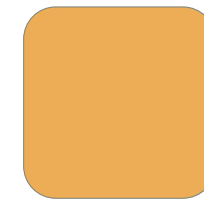
While working with Moya Living, expect a high-level experience, with attention to every single detail. The ingenious team of designers, engineers and craftsmen bring passion to all projects. Simply put - we love what we do. Together, we look forward to bringing your vision to life.



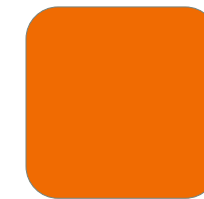
Blush
i7066 - HR/M



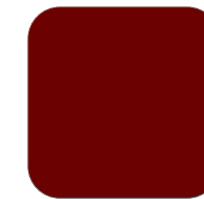
Dandy
i1012 - HR/M



Mango
i1034 - HR/M



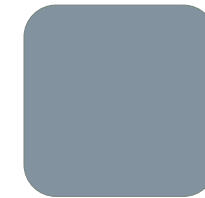
Palm Springs
i2008 - HR-M



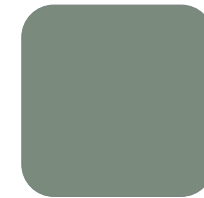
Pretentious Red
i3004 - HR/M



Avocado
5803A64318A00



Provence
i5856 - HR/M



Galapagos
i7033 - HR/M



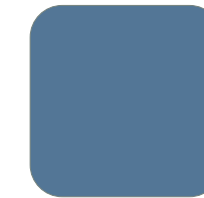
Laguna Blue
i5003 - HR-M



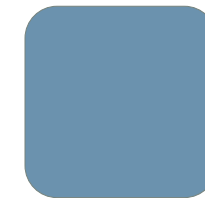
Manhattan Blue
i5008 - HR/M



Textured Marina
551TA54155A10



Periwinkle
i5014 - HR/M



Divine Blue
i5024 - HR/M



Turks & Caicos
i5018 - HR-M



Fiji
i6034 - HR/M



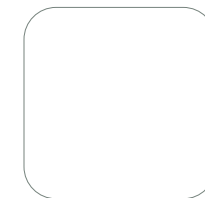
Bently Blue
i7031 - HR/M



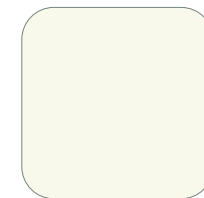
Slick Gunmetal
i7045 - HR/M



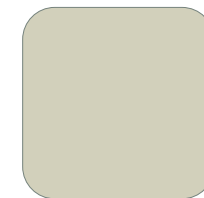
Grey Aluminium
i9007 - HR/Structure



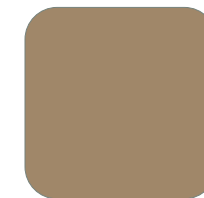
Polar White
i9003 - GL



Classic White
wh16



Silky Gray
i7044 - HR/M



Lanzarote
i1019 - HR/M



Steel Gray
gr494



Jet Black
i9005 - GL

San Clemente Morrison Int.

San Clemente, CA

This San Clemente home showcases it's coastal side with our Bentley Blue powder-coated cabinetry and custom vent hood. The bamboo inspired ceramic tile and Lynx appliances elevate this space in every way.

Color: Bentley Blue (i7031 -hr/m)

Pulls: Mockett (Satin Stainless Steel)

Appliances: Zephyr Custom Hood
-DCS Grills
-Perlick Refrigerator (panel-ready)

Designer: Morrison Interiors

Photographer: Michael Clifford



San Clemente American Dream

San Clemente, CA

An outdoor kitchen designed for entertaining. Luxe powder-coated steel cabinetry accompanied with stunning coastal views. Now this is the American Dream. The design is a timeless, classic kitchen.

Color: Silky Gray (i7040-hr/ml)
Pulls: Ashley Norton Urban Pull (dark oil rubbed)
Appliances: FireMagic Echelon E660i
 -Big Green Egg XL
Countertops: Lapitec Bianco Aurora
Photographer: Darlene Halaby



03

View of The Palms

Vista Las Palmas, CA

The mid-century lovers playground, Vista Las Palmas in Palm Springs. Shown here is gorgeous cabinetry for outdoor entertaining. Our cabinets are made of stainless steel and then finished with a baked on powder-coat. The clients fully embraced this color and even matched it to the trim of their roof.

Color: Fiji (i6034-hr/m)

Pulls: Mockett DP-128 Roundtop (stainless steel)

Appliances: Alfresco Grill 42"
-Perlick Refrigerator Drawers (panel-ready)

Countertops: Vetrazzo

Designer: Modern Hacienda

Photographer: Darlene Halaby



04

Desert Oasis

Indian Wells, CA

The Modern Polynesian Show-House in Indian Wells, CA is an entertainers dream. Moya Living stainless steel cabinetry finished in a baked-on powder-coat. The Architectural Bronze II in a fine texture glimmer pairs beautifully with Hestan appliances in Cintra Orange.

Color: Architectural Bronze II Fine Texture Glimmer
Pulls: Ashley Norton MT3884 Knurled (Satin Nickel)
Appliances: Hestan 36" Grill
 -Hestan 24" Kegerator
 -Hestan 24" Refrigerator

Countertops: Porcelain by Dal Tile
Designers: Chris Barrett, Michael Berman
Photographer: Hugo Landa



Rancho Santa Fe Vineyard Estate

Rancho Santa Fe, CA

This Spanish inspired villa situated in the exclusive Rancho Santa Fe of San Diego pairs sensationally with Moya Living. The outdoor kitchen in Divine Blue enhances the Mediterranean feel of this stunning home.

Color: Texture Marina Blue (S/G - BL04)

Pulls: Mockett DP-128 Rountop (stainless steel)

Appliances: FireMagic Echelon E1060i
-Perlick Refrigerator

Countertops: Quartzite

Contractor: Mark v Agee

Photographer: Darlene Halaby



06

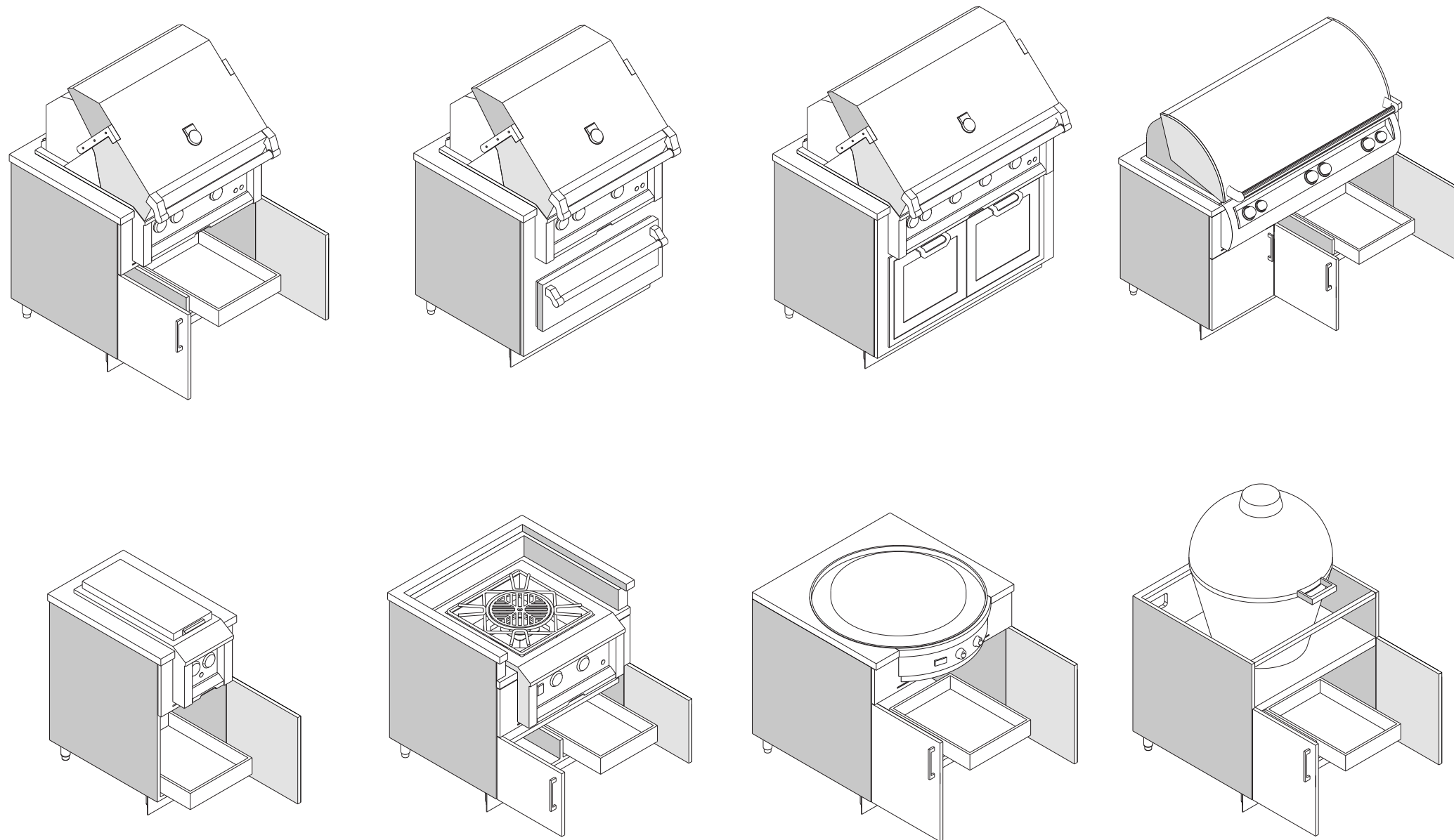
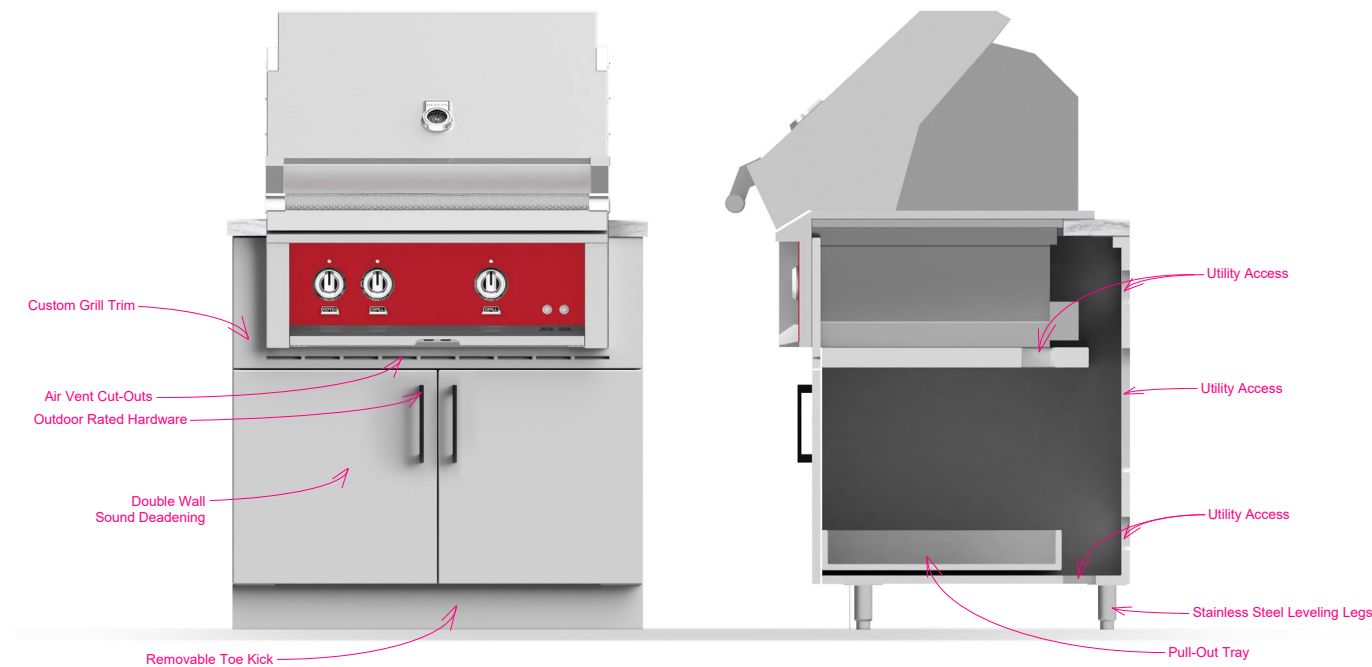
Grill Base Cabinets

Standard Dimensions:

- 18" – 62" width in 3" increments
- 34-1/2" height x 27-7/8" depth
- Custom sizes available

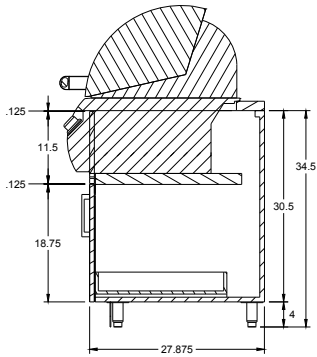
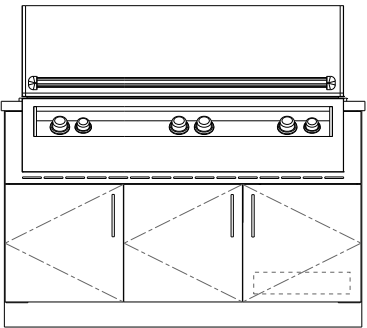
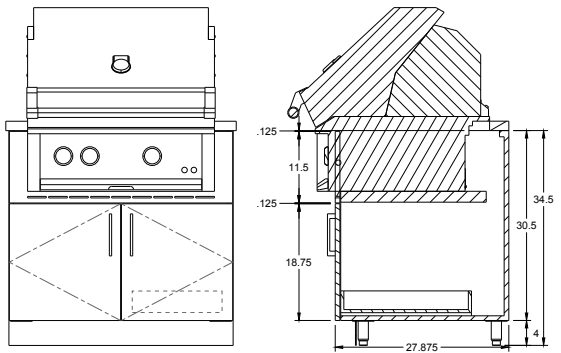
The Difference:

- Made of stainless steel built to last a lifetime
- Powder coated superior colors
- Handcrafted design and metalwork
- Detachable door and drawer fronts
- Custom designs available
- Cabinet embellishments and laser etching
- Fully welded stainless steel box
- Premium self closing hinges and slides
- Endless color choices with UV resistance
- Exceptionally durable and easy to clean
- Precision craftsmanship
- Local direct resource at your disposal
- Luxury client experience
- Made in the USA



Grill Base
2 Door + 1 Pullout Tray

- 36" MOBA-G-201 (30.5x27x36)
- 42" MOBA-G-201 (30.5x27x42)
- 48" MOBA-G-201 (30.5x27x48)



Grill Base
3 Door + 1 Pullout Tray

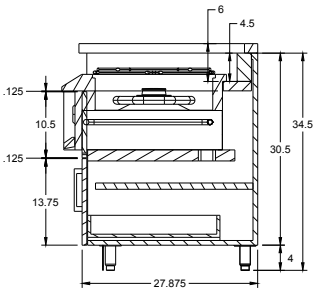
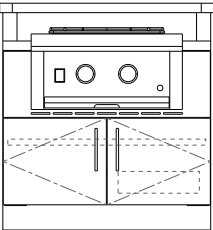
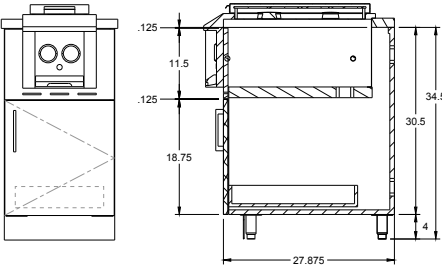
- 54" MOBA-G-301 (30.5x27x54)
- 62" MOBA-G-301 (30.5x27x62)

Increase storage by opting for three doors. A feature that will save time and space.

Side Burner/Griddle Base
1 Door + 1 Pullout Tray

- 18" MOBA-G-101 (30.5x27x18)
- 21" MOBA-G-101 (30.5x27x21)
- 24" MOBA-G-101 (30.5x27x24)

This feature allows for versatility, convenience, and cooking capabilities for preparing a wider rage of foods in your outdoor cooking space.



Power Burner Base
2 Door + 1 Pullout Tray

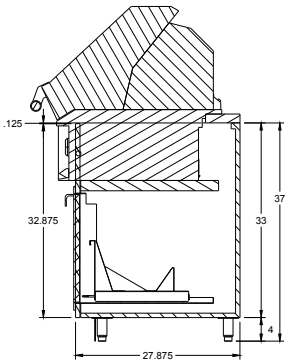
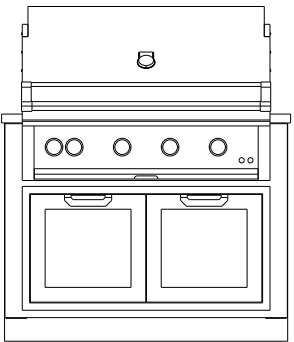
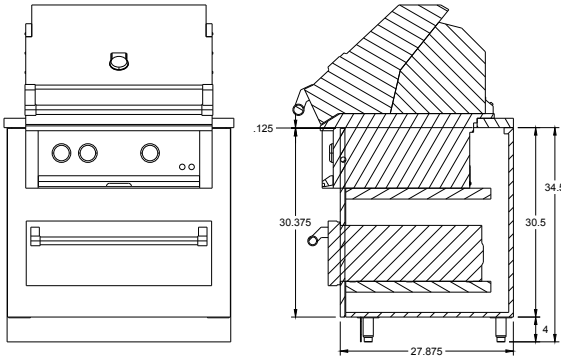
- 33" MOBA-PB-201 (30.5x27x33)
- 36" MOBA-PB-201 (30.5x27x36)

High-intensity professional cooking right in the comfort of the home. This feature offers significantly more heat than traditional burners. Moya Living durable and sleek cabinetry to accompany.

Grill Base
Warming Drawer

- 36" MOBA-GW-000 (30.5x27x36)
- 42" MOBA-GW-000 (30.5x27x42)
- 48" MOBA-GW-000 (30.5x27x48)

This feature is designed to keep food warm at a consistent temperature until ready to be served. Great for multi-course meals and entertaining.



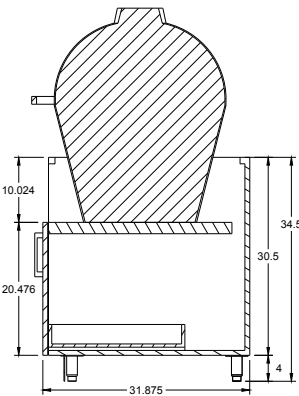
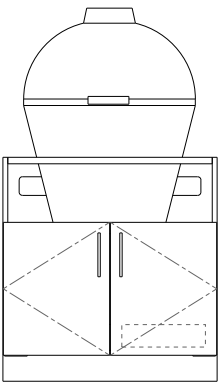
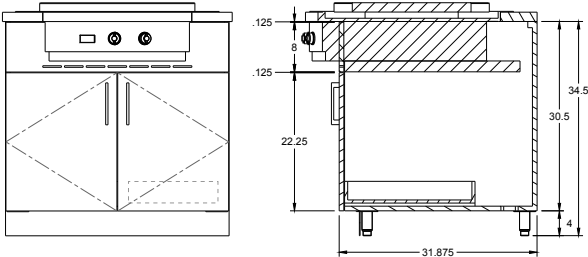
Grill Base
+ Access Doors

- 36" MOBA-GA-000 (33x27x36)
- 42" MOBA-GA-000 (33x27x42)
- 48" MOBA-GA-000 (33x27x48)

EVO Griddle Base
2 Door + 1 Pullout Tray

- 36" MOBA-EVO-201 (30.5x31x36)
- 39" MOBA-EVO-201 (30.5x31x39)

The EVO grill is an entertainers favorite. Clean, versatile, and pairs beautifully with powder-coated stainless steel.



Smoker Base
2 Door + 1 Pullout Tray

- 24" MOBA-S-201 (30.5x31x24)
- 27" MOBA-S-201 (30.5x31x27)
- 30" MOBA-S-201 (30.5x31x30)
- 33" MOBA-S-201 (30.5x31x33)
- 36" MOBA-S-201 (30.5x31x36)

The art of slow cooking starts with this unique feature and the rich smoky flavors that accompany.

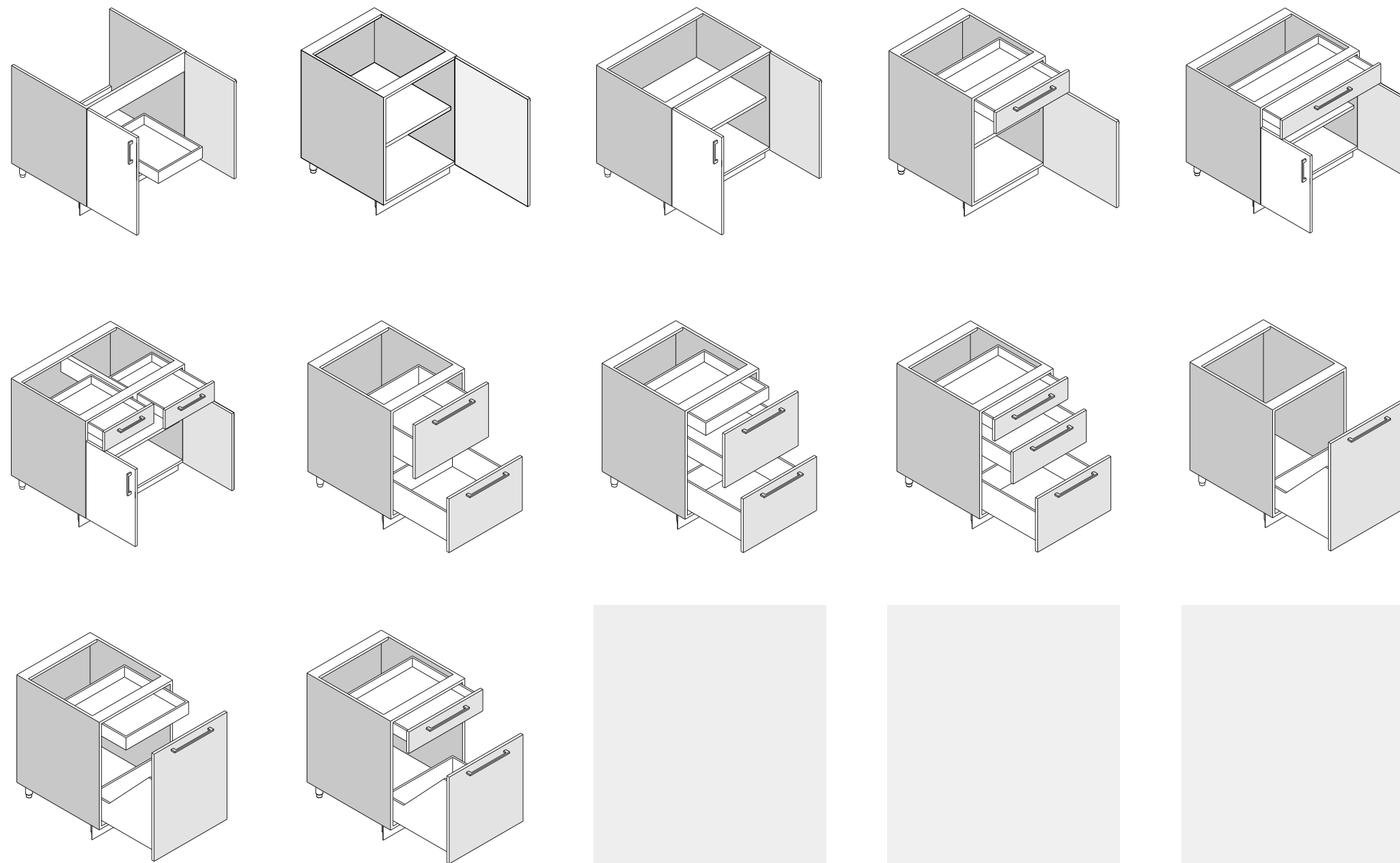
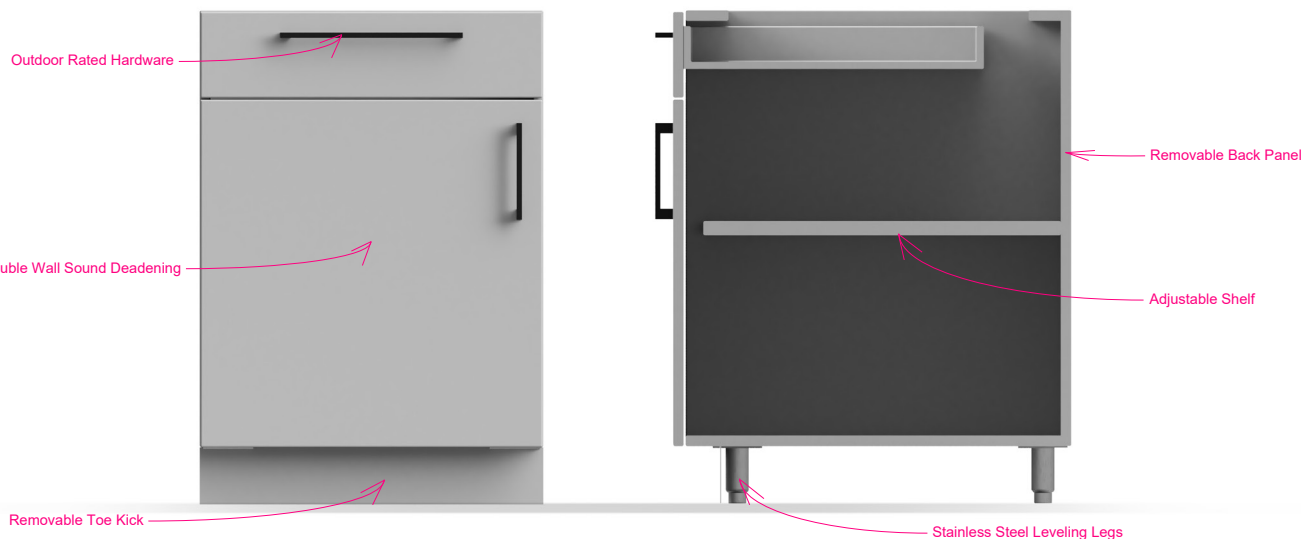
Base Cabinets

Standard Dimensions:

- 12" – 48" width in 3" increments
- 34-1/2" height by 27-7/8" depth
- Custom sizes available

The Difference:

- Made of stainless steel built to last a lifetime
- Powder coated superior colors
- Handcrafted design and metalwork
- Detachable door and drawer fronts
- Custom designs available
- Cabinet embellishments and laser etching
- Fully welded stainless steel box
- Premium self closing hinges and slides
- Endless color choices with UV resistance
- Exceptionally durable and easy to clean
- Precision craftsmanship
- Local direct resource at your disposal
- Luxury client experience
- Made in the USA



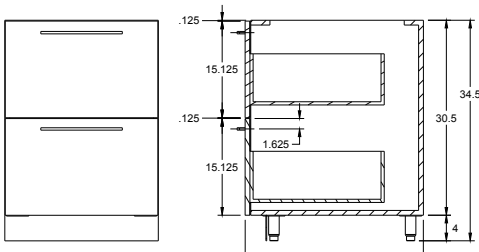
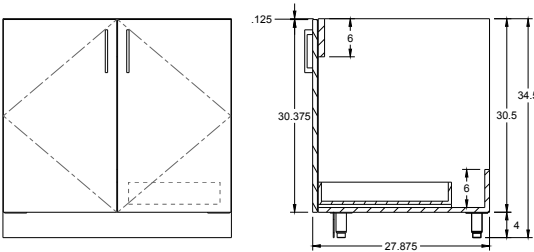
Sink Base Cabinet

1 Door + 1 Pullout Tray

- 18" MOBS-101 (30.5x27x18)
- 21" MOBS-101 (30.5x27x21)
- 24" MOBS-101 (30.5x27x24)

2 Door + 1 Pullout Tray

- 27" MOBS-201 (30.5x27x27)
- 30" MOBS-201 (30.5x27x30)
- 33" MOBS-201 (30.5x27x33)
- 36" MOBS-201 (30.5x27x36)
- 39" MOBS-201 (30.5x27x39)
- 42" MOBS-201 (30.5x27x42)
- 45" MOBS-201 (30.5x27x45)
- 48" MOBS-201 (30.5x27x48)

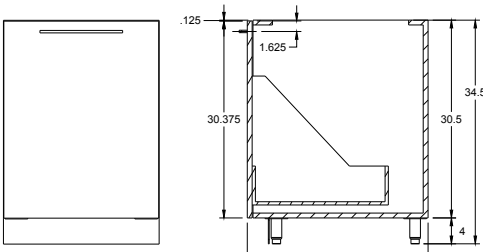
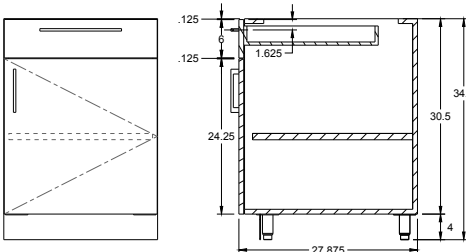


2 Drawer Cabinet

- 15" MOB-020 (30.5x27x15)
- 18" MOB-020 (30.5x27x18)
- 21" MOB-020 (30.5x27x21)
- 24" MOB-020 (30.5x27x24)
- 27" MOB-020 (30.5x27x27)
- 30" MOB-020 (30.5x27x30)
- 33" MOB-020 (30.5x27x33)
- 36" MOB-020 (30.5x27x36)
- 39" MOB-020 (30.5x27x39)

1 Door 1 Drawer Cabinet

- 15" MOB-110(30.5x27x15)
- 18" MOB-110(30.5x27x18)
- 21" MOB-110(30.5x27x21)
- 24" MOB-110(30.5x27x24)



1 Drawer Trash Pull-out

- 15" MOB-010T (30.5x27x15)
- 18" MOB-010T (30.5x27x18)
- 21" MOB-010T (30.5x27x21)
- 24" MOB-010T (30.5x27x24)

Wast Bin 503.88.524

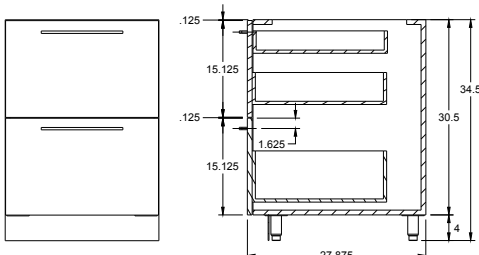
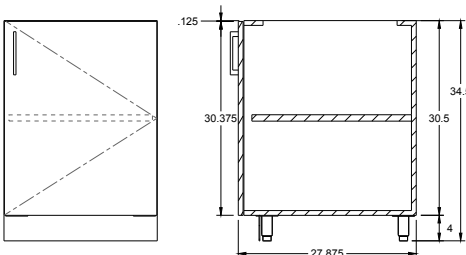
Hidden trash and/or recycle bin to maintain a clean look and kitchen. 15" Unit comes with one waste bin. All other units come with two standard waste bins.

Waste Bin Size: 14"W x 10-1/2"D x 22"H
Capacity: 59qt (49 liters)
Color: Gray
Material: Plastic

1 Door Cabinet

- 12" MOB-100 (30.5x27x12)
- 15" MOB-100 (30.5x27x15)
- 18" MOB-100 (30.5x27x18)
- 21" MOB-100 (30.5x27x21)
- 24" MOB-100 (30.5x27x24)

Full door cabinets provide plenty of room and protection for your larger kitchen items.



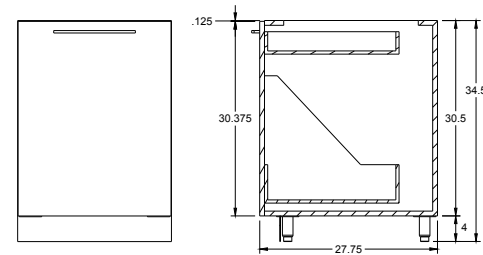
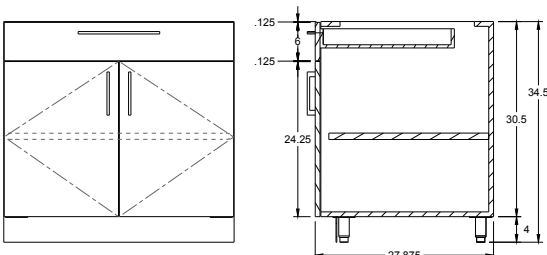
2 Drawer Cabinet + Hidden Drawer

- 15" MOB-021 (30.5x27x15)
- 18" MOB-021 (30.5x27x18)
- 21" MOB-021 (30.5x27x21)
- 24" MOB-021 (30.5x27x24)
- 27" MOB-021 (30.5x27x27)
- 30" MOB-021 (30.5x27x30)
- 33" MOB-021 (30.5x27x33)
- 36" MOB-021 (30.5x27x36)
- 39" MOB-021 (30.5x27x39)

Hidden drawer feature that provides option for even more storage.

2 Door 1 Drawer Cabinet

- 27" MOB-210(30.5x27x27)
- 30" MOB-210(30.5x27x30)
- 33" MOB-210(30.5x27x33)
- 36" MOB-210(30.5x27x36)
- 39" MOB-210(30.5x27x39)



1 Drawer Trash Pull-out + Hidden Drawer

- 15" MOB-011T (30.5x27x15)
- 18" MOB-011T (30.5x27x18)
- 21" MOB-011T (30.5x27x21)
- 24" MOB-011T (30.5x27x24)

Wast Bin 503.88.524

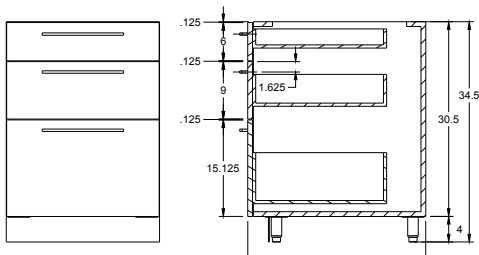
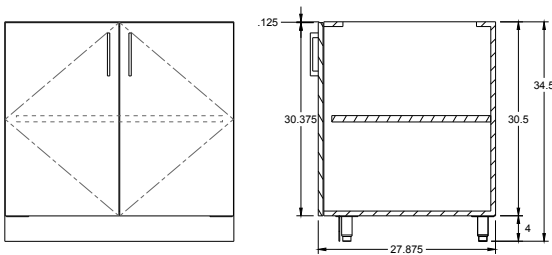
This cabinet includes a hidden drawer near the top of the cabinet for extra storage. 15" Unit comes with one waste bin. All other units come with two standard waste bins.

Waste Bin Size: 14"W x 10-1/2"D x 22"H
Capacity: 59qt (49 liters)
Color: Gray
Material: Plastic

2 Door Cabinet

- 27" MOB-200 (30.5x27x27)
- 30" MOB-200 (30.5x27x30)
- 33" MOB-200 (30.5x27x33)
- 36" MOB-200 (30.5x27x36)
- 39" MOB-200 (30.5x27x39)
- 42" MOB-200 (30.5x27x42)
- 45" MOB-200 (30.5x27x45)
- 48" MOB-200 (30.5x27x48)

Optimize storage for larger kitchen items with a two door solution.



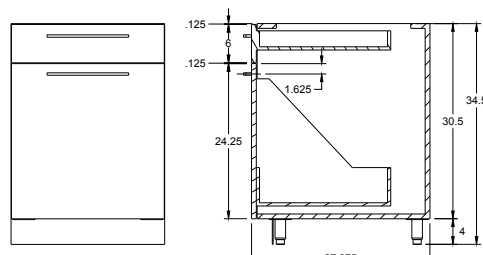
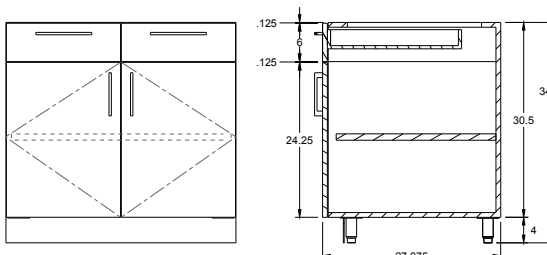
3 Drawer Cabinet

- 15" MOB-030 (30.5x27x15)
- 18" MOB-030 (30.5x27x18)
- 21" MOB-030 (30.5x27x21)
- 24" MOB-030 (30.5x27x24)
- 27" MOB-030 (30.5x27x27)
- 30" MOB-030 (30.5x27x30)
- 33" MOB-030 (30.5x27x33)
- 36" MOB-030 (30.5x27x36)
- 39" MOB-030 (30.5x27x39)

Optimal configuration for organizing small to large kitchen accessories.

2 Door 2 Drawer Cabinet

- 27" MOB-220(30.5x27x27)
- 30" MOB-220(30.5x27x30)
- 33" MOB-220(30.5x27x33)
- 36" MOB-220(30.5x27x36)
- 39" MOB-220(30.5x27x39)



2 Drawer Trash Pull-out

- 15" MOB-020T (30.5x27x15)
- 18" MOB-020T (30.5x27x18)
- 21" MOB-020T (30.5x27x21)
- 24" MOB-020T (30.5x27x24)

Wast Bin 503.88.524

15" Unit comes with one waste bin. All other units come with two standard waste bins.

Waste Bin Size: 14"W x 10-1/2"D x 22"H
Capacity: 59qt (49 liters)
Color: Gray
Material: Plastic

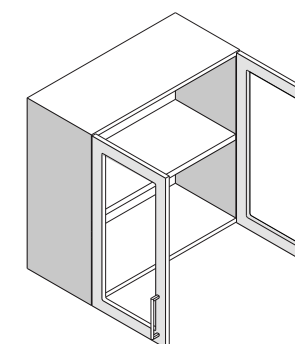
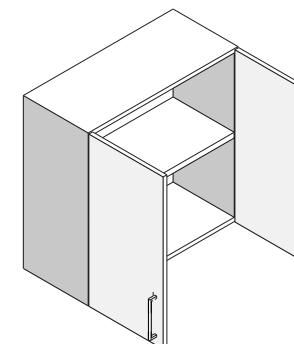
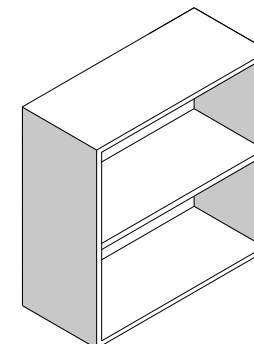
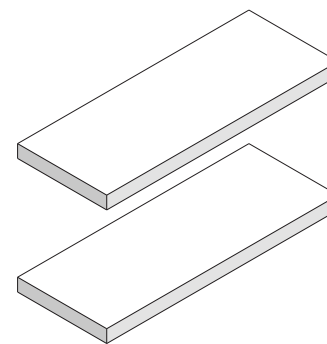
Upper Cabinets

Standard Dimensions:

- 12" – 48" width in 3" increments
- 30" height x 13-7/8" depth
- Custom sizes available

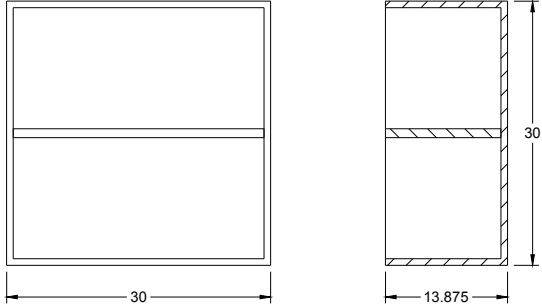
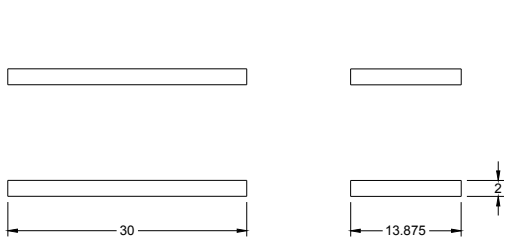
The Difference:

- Fully welded steel cabinet boxes
- Premium self closing hinges and slides
- Adjustable shelving
- Concealed hinges and drawer slides
- Concealed secret compartment drawers
- Powder coated superior colors
- Hypoallergenic
- More durable than wood
- No off gassing by product
- Variety of metals for the correct applications
- Easy to clean



Floating Wall Shelves

- 15" MOW-FS (2x13x15)
- 18" MOW-FS (2x13x18)
- 21" MOW-FS (2x13x21)
- 24" MOW-FS (2x13x24)
- 27" MOW-FS (2x13x27)
- 30" MOW-FS (2x13x30)
- 33" MOW-FS (2x13x33)
- 36" MOW-FS (2x13x36)
- 39" MOW-FS (2x13x39)
- 42" MOW-FS (2x13x42)
- 45" MOW-FS (2x13x45)
- 48" MOW-FS (2x13x48)



Open Wall Cubby

- 15" MOW-000 (30x13x15)
- 18" MOW-000 (30x13x18)
- 21" MOW-000 (30x13x21)
- 24" MOW-000 (30x13x24)
- 27" MOW-000 (30x13x27)
- 30" MOW-000 (30x13x30)
- 33" MOW-000 (30x13x33)
- 36" MOW-000 (30x13x36)
- 39" MOW-000 (30x13x39)
- 42" MOW-000 (30x13x42)
- 45" MOW-000 (30x13x45)
- 48" MOW-000 (30x13x48)

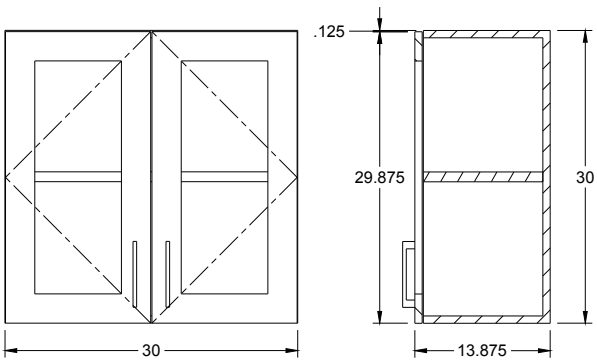
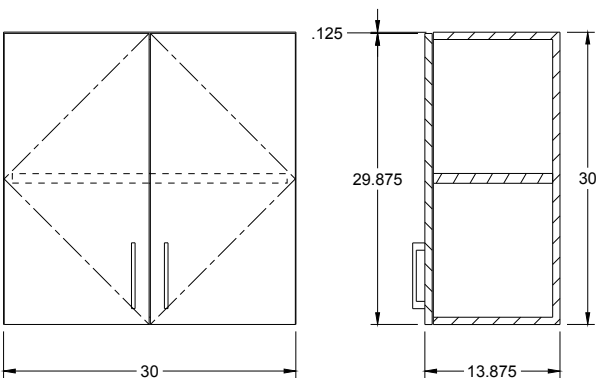
1 & 2 Door
Wall Cabinets

1 Door

- 12" MOW-100 (30x13x12)
- 15" MOW-100 (30x13x15)
- 18" MOW-100 (30x13x18)
- 21" MOW-100 (30x13x21)
- 24" MOW-100 (30x13x24)

2 Door

- 27" MOW-200 (30x13x27)
- 30" MOW-200 (30x13x30)
- 33" MOW-200 (30x13x33)
- 36" MOW-200 (30x13x36)
- 39" MOW-200 (30x13x39)
- 42" MOW-200 (30x13x42)
- 45" MOW-200 (30x13x45)
- 48" MOW-200 (30x13x48)



1 & 2 Glass Door
Wall Cabinets

1 Door

- 12" MOW-100G (30x27x12)
- 15" MOW-100G (30x27x15)
- 18" MOW-100G (30x27x18)
- 21" MOW-100G (30x27x21)
- 24" MOW-100G (30x27x24)

2 Door

- 27" MOW-200G (30x27x27)
- 30" MOW-200G (30x27x30)
- 33" MOW-200G (30x27x33)
- 36" MOW-200G (30x27x36)
- 39" MOW-200G (30x27x39)
- 42" MOW-200G (30x27x42)
- 45" MOW-200G (30x27x45)
- 48" MOW-200G (30x27x48)

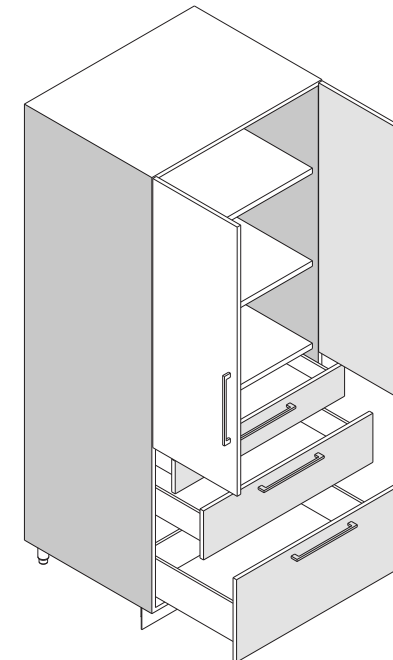
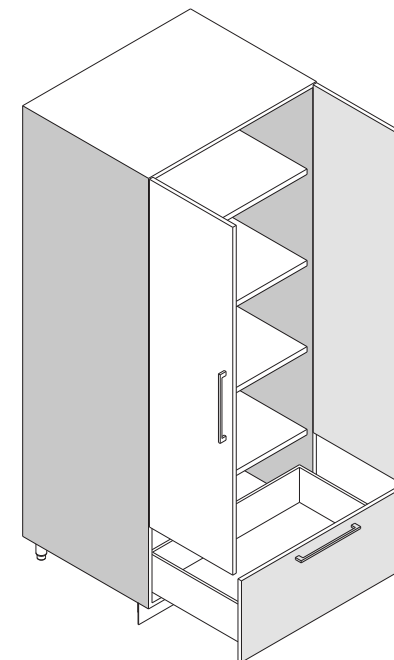
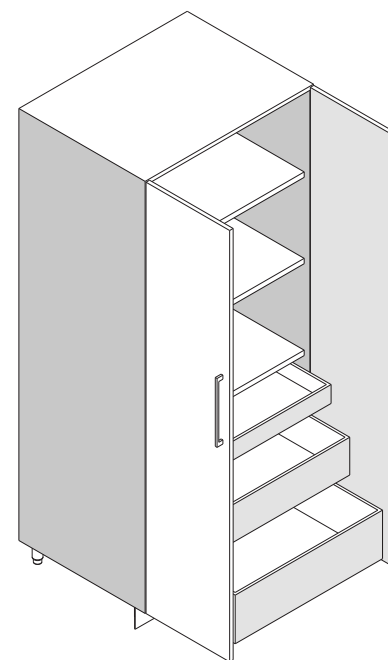
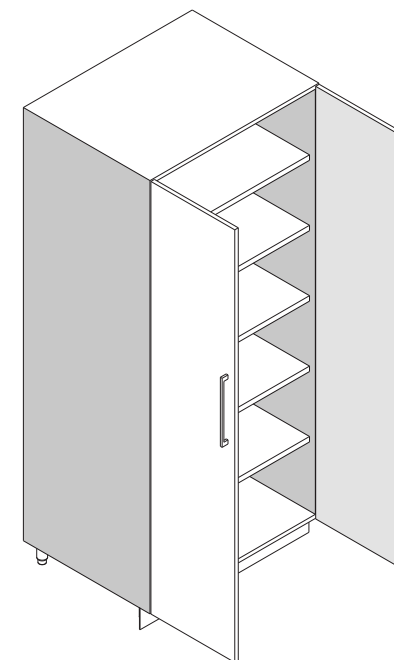
Tall Storage

Standard Dimensions:

- 15" – 48" width in 3" increments
- 84" height x 27-7/8" depth
- Custom sizes available

The Difference:

- Fully welded steel cabinet boxes
- Premium self closing hinges and slides
- Adjustable shelving
- Concealed hinges and drawer slides
- Concealed secret compartment drawers
- Powder coated superior colors
- Hypoallergenic
- More durable than wood
- No off gassing by product
- Variety of metals for the correct applications
- Easy to clean



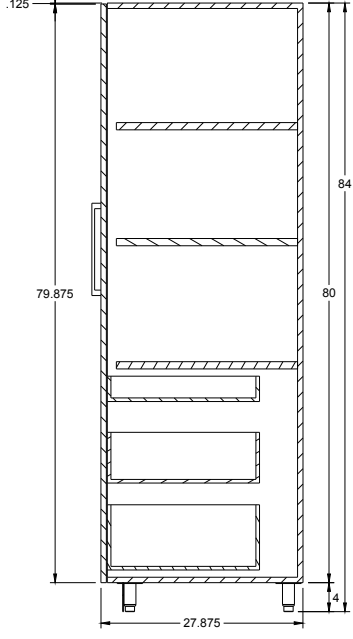
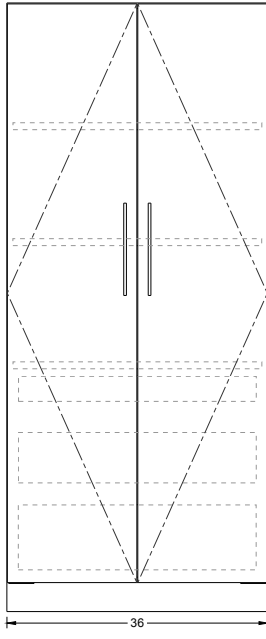
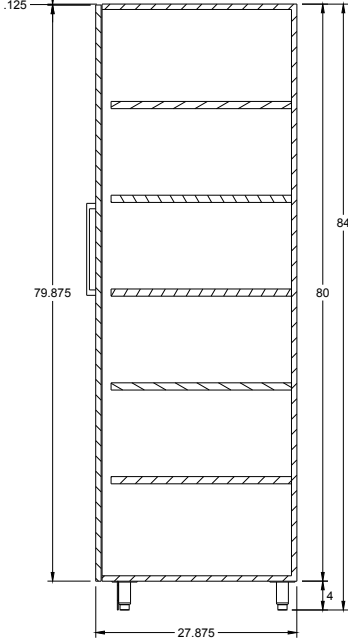
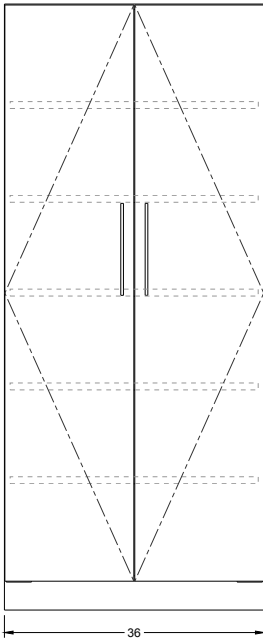
1 & 2 Door Tall Cabinets
1 Door

- 15" MOT-100 (80x27x15)
- 18" MOT-100 (80x27x18)
- 21" MOT-100 (80x27x21)
- 24" MOT-100 (80x27x24)

2 Door

- 27" MOT-200 (80x27x27)
- 30" MOT-200 (80x27x30)
- 33" MOT-200 (80x27x33)
- 36" MOT-200 (80x27x36)
- 39" MOT-200 (80x27x39)
- 42" MOT-200 (80x27x42)
- 45" MOT-200 (80x27x45)
- 48" MOT-200 (80x27x48)

Tall double door storage units that maximize your storage needs. With adjustable shelves.



1 & 2 Door Tall Cabinets
+ 3 Hidden Drawers
1 Door

- 15" MOT-103 (80x27x15)
- 18" MOT-103 (80x27x18)
- 21" MOT-103 (80x27x21)
- 24" MOT-103 (80x27x24)

2 Door

- 27" MOT-203 (80x27x27)
- 30" MOT-203 (80x27x30)
- 33" MOT-203 (80x27x33)
- 36" MOT-203 (80x27x36)
- 39" MOT-203 (80x27x39)

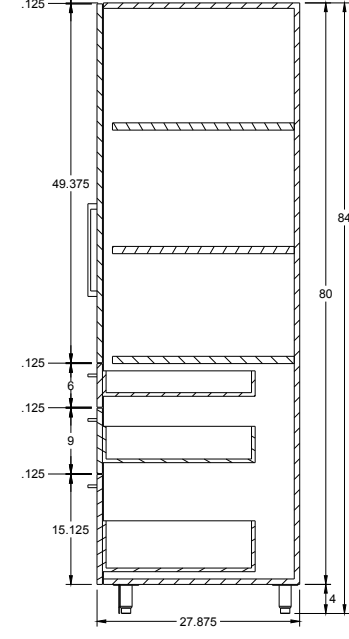
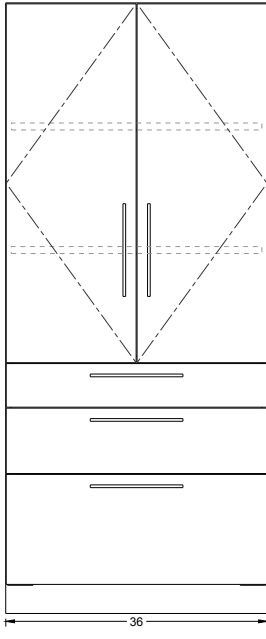
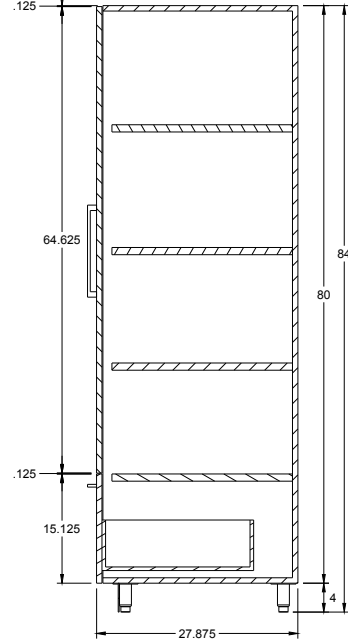
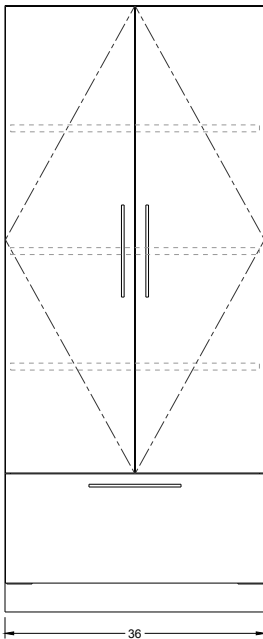
Double door units provide a clean look with a combination of shelving and drawer features behind closed doors.

1 & 2 Door 1 Drawer
Tall Cabinets
1 Door

- 15" MOT-110 (80x27x15)
- 18" MOT-110 (80x27x18)
- 21" MOT-110 (80x27x21)
- 24" MOT-110 (80x27x24)

2 Door

- 27" MOT-210 (80x27x27)
- 30" MOT-210 (80x27x30)
- 33" MOT-210 (80x27x33)
- 36" MOT-210 (80x27x36)
- 39" MOT-210 (80x27x39)



1 & 2 Door 3 Drawer
Tall Cabinets
1 Door

- 15" MOT-130 (80x27x15)
- 18" MOT-130 (80x27x18)
- 21" MOT-130 (80x27x21)
- 24" MOT-130 (80x27x24)

2 Door

- 27" MOT-230 (80x27x27)
- 30" MOT-230 (80x27x30)
- 33" MOT-230 (80x27x33)
- 36" MOT-230 (80x27x36)
- 39" MOT-230 (80x27x39)

Hardware Selection

An exquisite variety of styles, sizes, and metal finishes. All outdoor grade and season proof!

Select Finish:

- Dark Oil Rubbed
- Flat Black
- Polished Chrome
- Polished Nickel
- Satin Brass
- Satin Nickel



MT0337 Urban



MT0345 Apollo



MT4434 Phoenix



MT4461 Partial Knurled



MT2155 Wire



MT0376 Traditional



Edgewater



Jerico



MT4334



MT3885



Sommerville



Link



15

Inserts & Liners

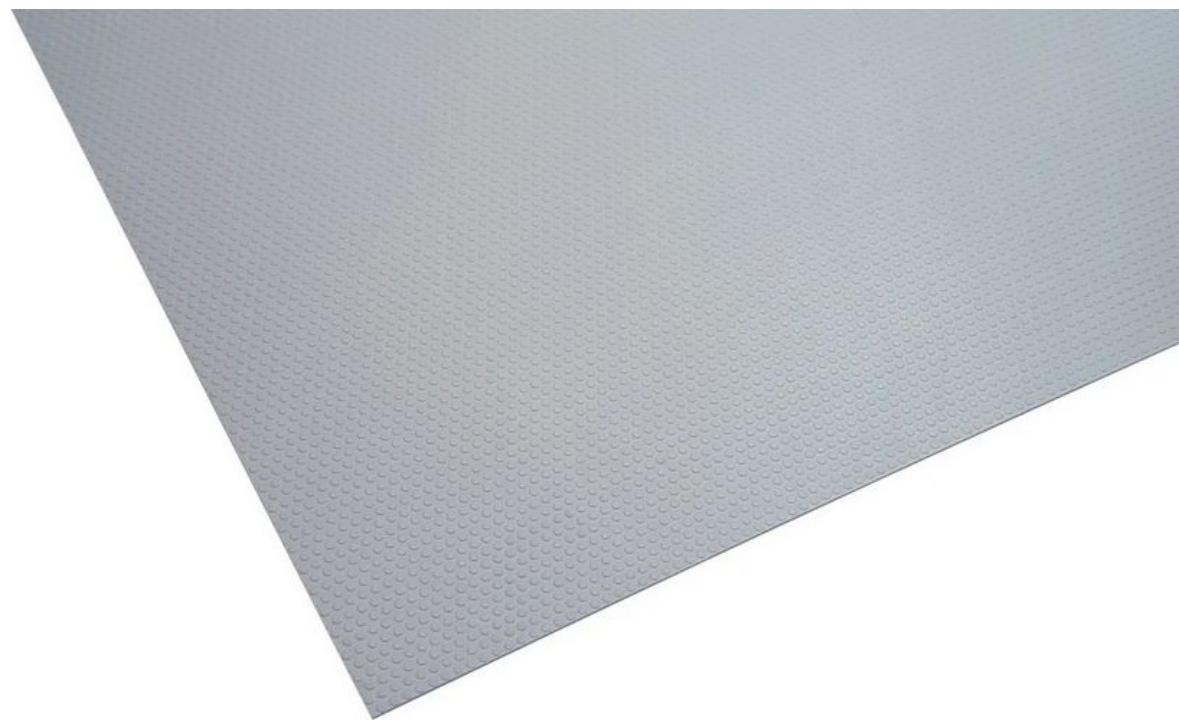
With the highest standards of quality and precision in the industry, every object has its place. Wood inserts available for every application along side non-slip mats.

Wood Finishes:

- Birch
- Walnut
- Black Ash

Liner Finishes: Non-Slip Mat

- Translucent (547.90.491) - Studded
- Polar White 002 (547.90.761) - Studded
- Silver Grey 828 (547.90.901) - Studded
- Iron Grey 866 (547.90.521) - Studded
- Black 890 (547.92.326) - Fibre



Moya Living reigns as the paragon of creativity and innovation,
adorning the visions of architects and designers across the nation.



www.moyaliving.com | 800.545.8816
17430 Mt. Cliffwood Cir, Fountain Valley, CA 92708
V1 2023